

SPOT WELDING MACHINE ARMS & CAPS



CenterLine Spot Welding Machine Arms are engineered and manufactured to accommodate any of the standard line **CenterLine Electrode Holders** as well as most other special shank type holders which might be required for specific special applications.

Among the benefits to be obtained from use of our **Spot Welding Arms** are:

- **reduction in required set-up time** resulting from easier front attachment feature.
- **extended arm life** which occurs as a consequence of reduced bolt hole thread wear. Hole and threads are cut through steel insert which is less malleable than copper used for basic arm.

NOTE: CenterLine can engineer and/or manufacture special spot welding machine arms for particular applications based on customer specifications.

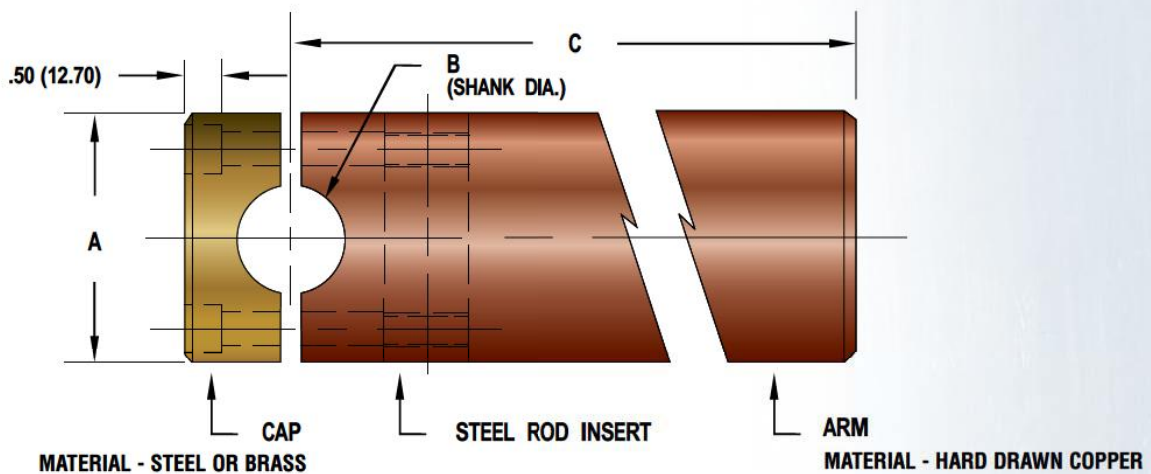


FIGURE 6-1

ORDERING CHART	
CLRAC	STANDARD PREFIX - ARM & CAP ASSEMBLY
04 THRU 16	"A" DIAMETER - .25 (6.35) INCREMENTS
06 THRU 16	"B" DIAMETER- 12 (3.18) INCREMENTS
8 THRU 50	"C" DIMENSION - 1.00 (25.40) INCREMENTS
B OR S	CAP MATERIAL - BRASS OR STEEL

EXAMPLE: Arm & Cap Assembly, "A" Dia. = 3.00 (76.20), "B" Dia. = 1.25 (31.75), "C" = 36.00 (914.40), Cap Material = Brass

Item No. **CLRAC - 1210 - 36 - B**

"A" _____
"B" _____
"C" _____ Cap material

• Dimensions Shown Are: inches (mm).

Contact CenterLine to order custom caps and arms to customer specifications.