

Southern Copper and Supply 800-289-2728

SHANKS FOR FEMALE CAP ELECTRODES



Phone: 866-634-8884

Fax: 866-239-6995

Email: cmw@cmwinc.com

CMW shanks are precision manufactured from CMW®3 class 2 material to provide a high quality mount for cap type electrodes. They are designed for high strength and electrical conductivity.

*These shanks are shown with a blind water hole for cap replacement without shutting off water. Shanks with through water holes are available, by adding "TH" to the basic part number. Example: MP30212TH.

SHANKS FOR FEMALE CAP ELECTRODES

- See pages 8 & 9 for CMW standard nose and GCAP® electrode caps



SHANKS FOR FEMALE CAPS WITH #4 RW TAPERS

Part No.	A	B
MP3012	1.25	1.75
MP3013	1.50	2.00
MP3014	1.75	2.25
MP3015	2.00	2.50
MP3016	2.25	2.75
MP3017	2.50	3.00
MP3018	2.75	3.25
MP3019	3.00	3.50
MP30112	3.25	3.75
MP30114	3.50	4.00
MP30116	3.75	4.25
MP30118	4.00	4.50

BENT OFFSET SHANKS FOR FEMALE CAPS WITH #4 RW TAPERS

Part No.	A	B	C
MP3019-08	2.62	3.28	0.50
MP3019-12	2.56	3.22	0.75
MP30112-12	2.81	3.47	0.75
MP30112-16	2.37	3.03	1.00
MP30116-16	2.87	3.53	1.00
MP30116-20	2.60	3.28	1.25

Bent Dimensions for Reference Only



SHANKS FOR FEMALE CAPS WITH #5 RW TAPERS

Part No.	A	B
MP3023	1.46	2.00
MP3024	1.71	2.25
MP3025	1.96	2.50
MP3026	2.21	2.75
MP3027	2.46	3.00
MP3028	2.71	3.25
MP3029	2.96	3.50
MP30212	3.21	3.75
MP30214	3.46	4.00
MP30216	3.71	4.25
MP30218	3.96	4.50
MP30220	4.21	4.75
MP30222	4.46	5.00

BENT OFFSET SHANKS FOR FEMALE CAPS WITH #5 RW TAPERS

Part No.	A	B	C
MP3029-08	2.58	3.20	0.50
MP3029-12	2.60	3.12	0.75
MP30212-12	2.77	3.44	0.75
MP30212-16	2.33	3.00	1.00
MP30214-12	3.00	3.66	0.75
MP30214-16	2.81	3.48	1.00
MP30216-16	2.83	3.49	1.00
MP30216-20	2.77	3.43	1.25

Bent Dimensions for Reference Only



SHANKS FOR FEMALE CAPS WITH #6 RW TAPERS

Part No.	A	B
MP3044	1.64	2.25
MP3045	1.89	2.50
MP3046	2.14	2.75
MP3047	2.39	3.00
MP3048	2.64	3.25
MP3049	2.89	3.50
MP30412	3.14	3.75
MP30414	3.39	4.00
MP30416	3.64	4.25
MP30418	3.89	4.50
MP30420	4.14	4.75
MP30422	4.39	5.00

BENT OFFSET SHANKS FOR FEMALE CAPS WITH #6 RW TAPERS

Part No.	A	B	C
MP3049-08	2.69	3.30	0.50
MP30412-12	2.81	3.42	0.75
MP30414-12	2.94	3.55	0.75
MP30416-16	3.06	3.67	1.00
MP30420-20	3.25	3.86	1.25

Bent Dimensions for Reference Only

Southern Copper and Supply 800-289-2728

SHANKS FOR MALE CAP ELECTRODES



Phone: 866-634-8884

Fax: 866-239-6995

Email: cmw@cmwinc.com

CMW shanks are precision manufactured from CMW®3 class 2 material to provide a high quality mount for cap type electrodes. They are designed for high strength and electrical conductivity.

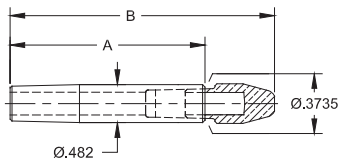
SHANKS FOR MALE CAP ELECTRODES

- See pages 8 & 9 for CMW standard nose and GCAP® electrode caps



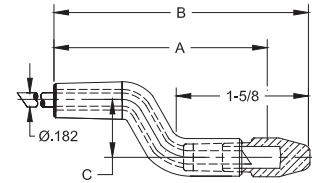
SHANKS FOR MALE CAPS WITH #4 RW TAPERS

Part No.	A	B
3012	1.25	1.88
3013	1.50	2.12
3014	1.75	2.38
3015	2.00	2.62
3016	2.25	2.88
3017	2.50	3.12
3018	2.75	3.38
3019	3.00	3.62
30112	3.25	3.88
30114	3.50	4.12
30116	3.75	4.38
30118	4.00	4.62



BENT OFFSET SHANKS FOR MALE CAPS WITH #4 RW TAPERS

Part No.	A	B	C
3019-08	2.62	3.37	0.50
3019-12	2.56	3.31	0.75
30112-12	2.81	3.56	0.75
30112-16	2.37	3.12	1.00
30116-16	2.87	3.62	1.00
30116-20	2.62	3.37	1.25

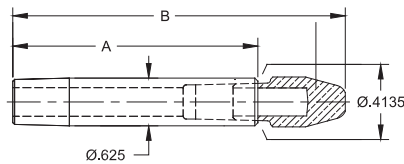


Bent Dimensions for Reference Only



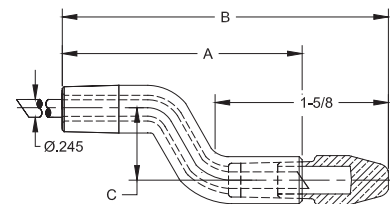
SHANKS FOR MALE CAPS WITH #5 RW TAPERS

Part No.	A	B
3022	1.25	2.00
3023	1.50	2.25
3024	1.75	2.50
3025	2.00	2.75
3026	2.25	3.00
3027	2.50	3.25
3028	2.75	3.50
3029	3.00	3.75
30212	3.25	4.00
30214	3.50	4.25
30216	3.75	4.50
30218	4.00	4.75
30220	4.25	5.00
30222	4.50	5.25



BENT OFFSET SHANKS FOR MALE CAPS WITH #5 RW TAPERS

Part No.	A	B	C
3028-08	2.37	3.12	0.50
3028-12	2.31	3.06	0.75
30212-12	2.81	3.56	0.75
30212-16	2.37	3.12	1.00
30214-12	3.06	3.81	0.75
30214-16	2.62	3.37	1.00
30214-20	2.37	3.12	1.25
30216-16	2.87	3.62	1.00
30216-20	2.62	3.37	1.25

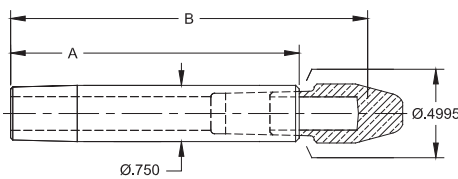


Bent Dimensions for Reference Only



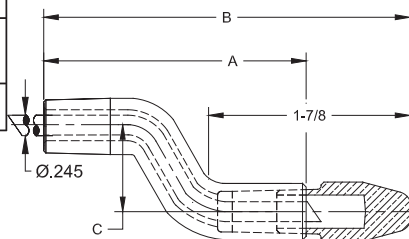
SHANKS FOR MALE CAPS WITH #6 RW TAPERS

Part No.	A	B
3043	1.50	2.62
3044	1.75	2.88
3045	2.00	3.12
3046	2.25	3.38
3047	2.50	3.62
3048	2.75	3.88
3049	3.00	4.12
30412	3.25	4.38
30414	3.50	4.62
30416	3.75	4.88
30418	4.00	5.12
30420	4.25	5.38
30422	4.50	5.62



BENT OFFSET SHANKS FOR MALE CAPS WITH #6 RW TAPERS

Part No.	A	B	C
30412-08	2.62	3.75	0.50
30412-12	2.56	3.69	0.75
30414-12	2.75	3.88	0.75
30416-16	2.87	4.00	1.00
30420-20	3.12	4.25	1.25



Bent Dimensions for Reference Only